

SPECIFICATIONS

INSTANT HOT + AMBIENT FILTERED WATER

K-B-WFADUO

FEATURES AND BENEFITS

- Filtered steaming hot and ambient cold water delivered from a dual faucet
- Adjustable temperature for steaming hot water to 96°C
- Child safety lock on dual faucet
- Quality Stainless Steel tank
- Cheaper than boiling a kettle
- Ideal for refreshing drinks, instant tea or coffee, blanching vegetables, rinsing dishes and many other uses.
- 1 year warranty



WaterMark

AS3498

Lic. WM-022455

IAPMO R&T OCEANA



ASA-142012/00

WaterFilters
AUSTRALIA

INSTANT HOT + AMBIENT FILTERED WATER

K-B-WFADUO

SPECIFICATIONS

CAPACITY	60 Cups per hour
VOLTAGE	240V
ELEMENT	50Hz 1250W
TANK CAPACITY	2.4 L
MINIMUM INLET WATER PRESSURE	240 kPa
MAXIMUM INLET WATER PRESSURE	350 kPa (Pressure Limiting Valve supplied)
AUSTRALIAN SAFETY APPROVAL	Certificate No: 142012/00
WATERMARK CERTIFIED	Lic No: WMKA-022045

INSTALLATION PRE-REQUIREMENTS

SPACE REQUIRED

- The boiler tank must be situated within 600 mm of the dual faucet.
- Undersink space required:
Height 334 mm
Width 200 mm
Depth 237 mm

Note: Allow an additional 100mm around the front and sides of the Boiler Tank to facilitate air flow. No clearance is required at the back of the unit.

WATER SUPPLY

- A standard cold water supply fitted with a 15mm stop tap situated within easy access of the intended location of the boiler tank. This must be installed by a qualified plumber and in accordance with local & state laws.
- A 350 kPa pressure limiting valve is supplied and must be installed.
- Water supply must be microbiologically safe.

POWER SUPPLY

- A standard 10amp 3pin power outlet conveniently placed within 1m of the intended location of the boiler tank. This must be installed by a qualified electrician.

DUAL FAUCET

- Please note a 35mm (1 3/8") hole needs to be drilled for the installation of the Dual Faucet.

INTERNAL STUFF

Easy installation

Easy to install with quick-connector fittings. Better connections lower the possibility of twisted or kinked water tubes.

Self-priming expansion chamber

Through the chamber and atmospheric pressure during heating, the self-priming expansion chamber absorbs the steam back for recycling usage. This new design greatly reduces dripping (the flaw of traditional instant hot water dispensers).

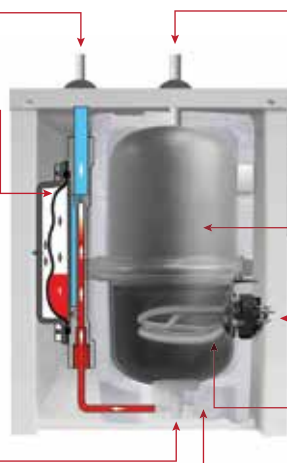
Due to the high temperature of water during heating, the tank is under pressure. The self-priming expansion chamber can decrease the pressure, dripping and leaking.

Theory of Laminar flow

Applying the hydrodynamics to the design, the water flows into the tank from the bottom. This could prevent the turbulence flow that leads to mix of cold and hot water.

Environmental Styrofoam

The best quality styrofoam offers great thermal insulation. Meets the UL94 standard (Standard for Flammability of Plastic Materials for Parts in Devices and Appliances). Environmental protection - recyclable material.



Energy-efficiency

Consumes less electricity than a 40 watt light bulb.

Temperature Dial

Easy adjustment by your fingertip. Adjusts from 60°C - 98°C. Suitable for cooking, instant coffee and tea.

Detachable stainless steel tank

A large 2.4 litre tank supplies plentiful 60 cups per hour capacity. Upper and lower tank bodies are fixed with clamp. The new design 'detachable stainless tank' can be cleaned after using for a period of time. The new tank is made of ST304, with built-in integral body. No welding joint or seam on the tank exists. Therefore, no leaking or release of heavy metals.

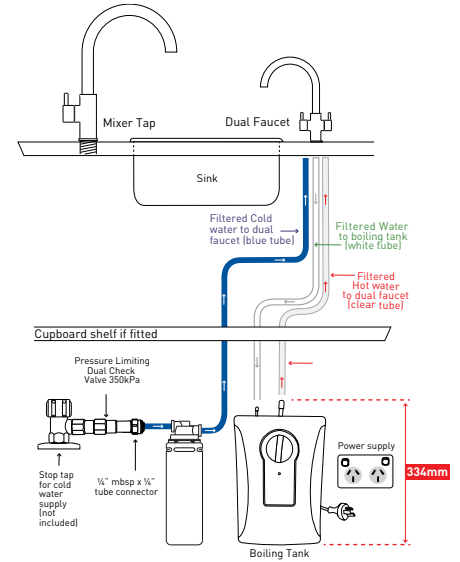
Automated Heater protection

When there is no water left in the tank, the self re-setting thermal fuse protects the product from dry boiling and dry start up.

SUS304 Ring Type heater

SUS304 Ring Type heater is better than U-shape brass made heater. No release of heavy metal will occur. It is relatively more hygienic and durable. Heat conduction area of Ring Type heater is twice as large as the U-shape brass heater. It has the features of faster heat conduction, more power-efficient, and longer life. Heater with 780/1300 wattage is more efficient than other brands.

TYPICAL INSTALLATION



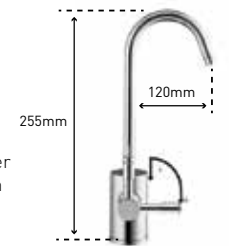
FILTER SYSTEM INCLUDED

- WFA Premium quality (0.5) micron filtered water removing all the nasties like Chlorine, bad tastes & odours and potentially harmful contaminants such as Giardia & Cryptosporidium
- Quick change sanitary bayonet cartridge
- DIY cartridge replacement, as easy as changing a lightbulb
- Annual filter change (monitor alarm supplied)



FAUCET OPERATION

The hot water lever has a safety mechanism. To use, press down on top of the lever to release the lock then push the lever forward to access steaming hot water.



To find out more call us on 02 9905 6211
Or if you prefer, you can email us at sales@wfa.com.au

WaterFilters
AUSTRALIA