

WaterFilters
AUSTRALIA

**ECO
REGULAR
TRAVELLER**



**ECO REGULAR TRAVELLER
FILTER SYSTEM**

OWNER'S MANUAL

**MODEL:
K-C-ECOREG**

Owners Manual

INSTALLATION INSTRUCTIONS

WARNING: For correct operation of this system it is essential to observe the instructions below.

IMPORTANT NOTES

- This system is only to be used when connecting to municipal water supplies. Water quality and usage will dictate filter life.

NOTES

- 1) This installation must comply with all applicable state and local regulations.
- 2) Do not use with water that is microbiologically unsafe or of an unknown quality without disinfection before or after the system.
- 3) When storing filtered water in a refrigerator please ensure the container has an air tight seal / lid.

1. Open Carton and Inspect Parts. Installation

Parts included – refer installation diagram

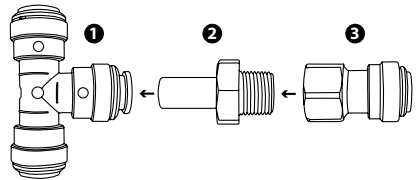
- 1 John Guest 12mm Tee
- 2 John Guest Stem Adapter 12mm stem to 3/8" MBSP
- 3 John Guest Tube Adapter 3/8" FBSP to 3/8" tube connect
- 4 Head Assembly with Mounting bracket
- 5 John Guest Adapters (2) 3/8" MBSP to 3/8" tube connect
- 6 Filter Cartridge
- 7 Chrome Ceramic disc filter tap
- 8 John Guest Tap Adapter
- 9 John Guest Tubing 3/8" x 1.5m
- 10 Mounting screws (2)
- 11 Plumbing tape

Note:

Item 2 above includes a check valve to provide prevention against backflow.

2. Assemble Tee Section

- Insert 2 into 1 - push firmly, then pull back to tighten seal.
- Screw 3 onto 2 and ensure a tight seal.



3. Connect to Water Supply

Please ensure water supply to van is turned off.

- Under the sink, locate the 12mm tubing that supplies the cold water to the kitchen tap. This will be found under the sink.

Using a tube cutter or stanley knife:-

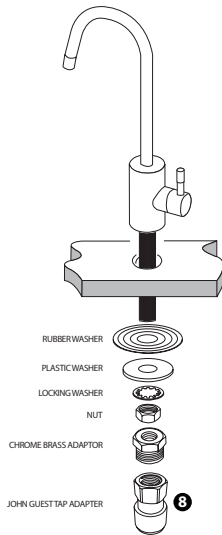
- Cut the 12mm tubing in a position that will allow easy connection of the tee section.
- Insert the assembled tee section.

4. Install the Filter Tap

If a hole for the filter tap is not provided.

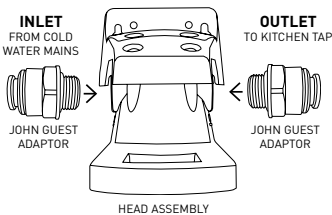
- Use a drill or hole cutter to cut a 12.70mm (1/2 inch) hole in the sink or counter top where the tap is to be located.
- Assemble and mount the tap as shown in diagram.
- Tighten locking nut beneath the sink to secure the tap firmly in position.
- Screw on John Guest Adapter 8 onto threaded base of filter tap. Use plumbing tap to provide seal.

FILTER TAP ASSEMBLY DIAGRAM



5. Connect John Guest Adapter to Head Assembly

- With plumbing tape, screw both John Guest adapters **5** into the inlet and outlet of the head assembly.



- Install filter cartridge into head assembly

6. Install the Filter Unit

- Position the filter head and cartridge in a location under the sink that provides easy access.
- Allow clearance under the filter for cartridge change.

Please note that for convenience the head and cartridge can be installed horizontally. Using the two screws provided:

- Mount the filter head and cartridge to the inside of the kitchen cupboard in the desired location.

7. Connect the Tubing

NOTE: Do not bend or kink tubing.

To avoid damaging o-rings when making a connection, cut tube neatly & squarely using a sharp clean blade only.

Take the length of polyethylene tube:

- Connect the tube to the John Guest fitting that is in the tee section.
- Run the attached tubing to the inlet of the filter head.
- Cut tube to length (allowing extra 20mm) and insert firmly into filter head connection. Pull back to ensure tight seal.

Take the remaining length of polyethylene tube and:

- Connect the tubing to the tap adapter. **8**
- Run the attached tubing to the outlet of the filter head.
- Cut tube to length (allowing extra 20mm) and insert firmly into filter head outlet connection.
- Check tube is firmly inserted.

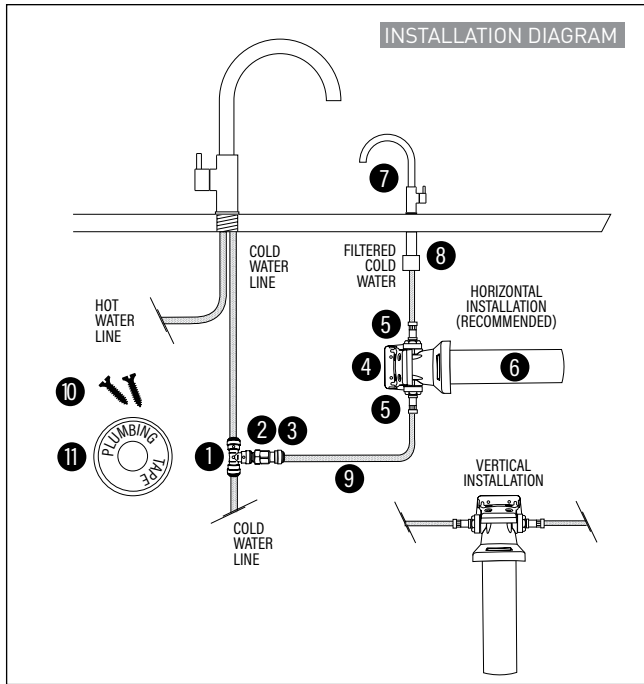
8. Activate System

- Turn on water supply.
- Turn filter tap on.
- Let water run for 1-2 minutes to purge air from system.

9. Check System for Leaks

10. Note: Plumbing Tape

When using plumbing tape to create a seal, it is recommended that the tape be wrapped at least 8–10 times around the threaded connection.



PRODUCT SPECIFICATION

- Usage: For mains cold water only.
- Temperature Range: 2-38°C
- Min. – Max. Working Pressure: 10-125 psi (0.7-8.6 bar)
- Service Flow Rate: 0-3 Litres per minute*
- Service life: 12 months*
- Rating: 1 micron nominal
- Removes/Reduces: Chlorine, cysts, giardia, cryptosporidium, bad taste and odours, and all particles down to 1 micron in size
- This filter does not remove fluoride
- Filter Change: 12 months or sooner if flow rate becomes inconveniently slow.
- This filter includes KDF media for protection against bacterial growth.

* Subject to water quality, water pressure and usage.

- | | |
|--|--|
| <p>① John Guest 12mm Tee</p> <p>② John Guest Stem Adapter 12mm stem to 3/8" MBSP</p> <p>③ John Guest Tube Adapter 3/8" FBSP to 3/8" tube connect</p> <p>④ Head Assembly with Mounting bracket</p> <p>⑤ John Guest Adapters (x2) 3/8" MBSP to 3/8" tube connect</p> <p>⑥ Filter Cartridge</p> | <p>⑦ Chrome Ceramic disc filter tap</p> <p>⑧ John Guest Tap Adapter</p> <p>⑧ John Guest Tubing 3/8" x 1.5m</p> <p>⑨ Mounting screws [2]</p> <p>⑩ Plumbing tape</p> |
|--|--|

WARRANTY

Product Specifications: *The unit must only be used for a potable water source and with cold water (with a temperature range between 2 and 38° C).*

Water Filters Australia Pty Ltd (WFA) warrants to you, the first person who has purchased and used the unit ("you") that this unit is free from defects due to faulty material and workmanship in accordance with the conditions set out in this document. This warranty is provided to you in addition to your rights at law, including but not limited to your rights under the Trade Practices Act 1074 (Cth) and applicable legislation in your Australian State or Territory.

What this warranty covers:

This warranty covers defects due to faulty material and workmanship of the unit supplied to you:

- For a period of 5 years from the date of purchase in respect of the entire unit, excluding the Replaceable

Elements. The Replaceable Elements are consumable components and all parts of the unit which can be replaced including but not limited to the filter or water treatment cartridge if there is a defect in the filter or cartridge. This does not include the replacement of the filter or cartridge to extend the life of the filter or cartridge. The life of the filter cartridge is affected by water quality, usage, and water pressure. The warranty only extends to the original purchaser of the unit.

What this warranty does not cover:

This warranty does not cover the unit or a Replaceable Element of the unit where:

- The defect, fault or failure is attributable, or substantially attributable to misuse, abuse, accident, misapplication, neglect, freezing, oxidizing agents (including but not limited to chlorine, ozone, chloramines and other related components) or act of God.

- The unit has been in conditions which do not conform to the recommended design guidelines or has been operated in a manner which is contrary to Water Filters Australia's printed instructions.
- The unit has not been installed in accordance with Water Filters Australia's printed instructions and has not been installed in compliance with all applicable laws, regulations, and industry standards.
- The unit has not been used in accordance with the manufacturer's instructions.
- The unit does not meet the conditions for use described in the owner's manual or performance data sheet for this unit.
- You use accessories or components which do not meet Water Filters Australia's specifications as set out in the Owner's Manual.
- The defect, fault or failure is due to normal wear and tear.
- The defect, fault or failure has occurred where the unit has been used reasonably or has reached its serviceable life.
- The serial or model number label of the unit is removed or defaced.
- The unit is serviced, modified, altered, or repaired by an unauthorized or unqualified person.

How to make a claim under this warranty:

To make a claim under this warranty you must contact Water Filters Australia within 21 days of the defect, fault or failure occurring. Water Filters Australia's Warranty Contact number is 1300 785 355. At the time of repair or replacement under your warranty claim you must provide to Water Filters Australia:

- Proof that you purchased the unit from an authorized retailer or dealer within the warranty time; and
- A copy of a certificate which certifies that the unit was installed in compliance with our printed installation instructions and all applicable laws, regulations, and industry standards. Water Filters Australia will only pay for repair or replacement upon receipt of proof of your purchase showing the date of purchase.

Limitation of Liability of Water Filters Australia under this warranty: Where a warranty exists or is implied by law, Water Filters Australia liability is limited (to the extent that it can be limited) to repair or replacement of the faulty Replaceable Element or the unit or an equivalent unit. Water Filters Australia may, in its discretion, choose whether it shall repair or replace any unit or Replaceable Element or Water Filters Australia may choose to pay to you the cost of replacing the Replaceable Element or the unit or the cost of having the unit repaired. To the extent permitted by law, Water Filters Australia assumes no liability

whatsoever and disclaims all liability for direct, indirect, or consequential loss, or special, general or other damage or expense caused by or arising out of:

- Any failure to install or use the unit in accordance with the Manufacturer's Instructions, the Installation and Operating Manual or Water Filters Australia's printed instructions; or
- The purpose for which you are purchasing the unit.

You acknowledge that the quality of water supplied and your water usage rate and influent water pressure may vary seasonally or over a period of time.

In addition to this water characteristics can differ if the unit is relocated or the environment changes.

You acknowledge that Water Filters Australia does not know your requirements and cannot and does not warrant that the unit is fit for the purpose for which you intend to use the unit or is appropriate for the purpose for which you intend to use the unit. Water Filters Australia does not authorize others to assume any obligation on its behalf even if you inform them of the purpose for which you intend to use this unit.

WARNING Water Filters Australia does not recommend making alterations to your existing plumbing to accommodate this filter system. If you wish to modify existing plumbing, you must comply with AS 3500 and use a licensed plumber. Where internal water pressure exceeds 500 kPa a Watermark approved Pressure Limiting Valve must be installed prior to the filter system.

WARNING The contaminants or other substances removed or reduced by this water treatment system are not necessarily in your water supply. Do not use with water that is microbiologically unsafe or of an unknown quality without disinfection before or after the system.

IMPORTANT This filter is designed to be used with mains/city water supplies.

Use of this system may increase the bacterial content of water unless supplementary treatment is provided.

CAUTION Safely isolate the water supply prior to installing the filter system to avoid injury and property damage.

Our goods come with guarantees that cannot be excluded under the Australian Consumer Law. You are entitled to a replacement or refund for a major failure and for compensation for any other reasonably foreseeable loss or damage. You are also entitled to have all the goods repaired or replaced if the goods fail to be of acceptable quality and the failure does not amount to a major failure.

Refer to wfa.com.au for warranty details.

Performance Data

Important Notice:

Read this performance data sheet and compare the capabilities of this unit with your actual water treatment needs.

FEATURES:

Provides filtered water through a dedicated filter tap.

Provides quality filtered water.

Easy installation and space saving design.

Compatible with any bench top including solid surface.

Suitable for vertical or horizontal installation to maximise cupboard space.

Finely filters to 1 micron and polishes mains water to a premium quality for:

- Drinking
- Cooking
- Tea & coffee
- Washing fruits & vegetables

The latest carbon block filtration technology reduces/removes:

- Chlorine
- Bad tastes
- Odours
- Dirt
- Rust
- Cysts (e.g. giardia & cryptosporidium)

Maintains healthy minerals and salts as well as fluoride.

Simple, easy to change DIY cartridge replacements.

Substance Requirements	Influent Challenge Concentration	Max. Permissible Product Water Concentration	Reduction Requirements	Minimum Reduction	Average
Standard 42	Aesthetic Effects				
Chlorine	2.0mg/L \pm 10%	5ppm	\geq 50%	25%	99%
Standard 53	Health Effects				
Cyst	Minimum 50,000/L	-	99.95%	99.99%	99.99%

*Tested using flow rate=0.5gpm; pressure=60psig; pH=7.5 \pm 0.5; temp=20°C \pm 2.5°C

HEALTH CLAIM PERFORMANCE:

This system complies with NSF/ANSI 42 and 53 for the reduction of the substances listed.

OPERATING SPECIFICATIONS:

- Service life: 12 months*
- Pressure Requirement: 10-125 psi (0.7 - 8.6 bar), non-shock.
- Temperature: 2-38° C
- Flow Rate: 0 - 3 litres per minute.

GENERAL INSTALLATION / OPERATION / MAINTENANCE REQUIREMENTS:

- Space required: 460mm x 225mm (allows space for a 12 month cartridge replacement)
- Install cartridge vertically or horizontally. However for ease of replacing cartridge, horizontal installation on right or left hand side of undersink kitchen cabinet is preferable.
- Flush new cartridge at full flow for 2-3 minutes until air is purged.


SPECIAL NOTICES:

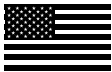
- Installation instructions, parts and service availability, and standard warranty are included with the product when shipped.
- This drinking water system must be maintained according to manufacturer's instructions, including replacement of filter cartridges.
- Do not use with water that is microbiologically unsafe, or of unknown quality without adequate disinfection before or after the system.
- Systems certified for cyst reduction may be used on disinfected water that may contain filterable cysts.
- Flush system for 1 minute after period of non-use exceeding 7 days.
- The contaminants or other substances removed or reduced by the water treatment system are not necessarily in your water.
- Check for compliance with state and local laws and regulations.

** Cartridge life and capacity will vary according to water pressure, water quality and usage.*

CARTRIDGE RE ORDER CODE: C-C-ECOREG

Check for compliance with state and local laws and regulations. Product performance is dependent upon incoming water conditions. This drinking water system must be maintained according to the manufacturer's instructions, including replacement of cartridge.

		AS3497 Lic.WM-032108 IAPMO R&T OCEANA	This appliance meets the domestic water treatment appliance Standards AS3497 for the following water treatment processes:
CLASS	TREATMENT TYPE	FUNCTION	PASS
I.	Microbiological Status Bacteriostatic	Will stop bacteria increasing but will not stop them unless IIa is passed.	N/A
II. II (a)	Microbiological Treatment Bacteria Removal	Will remove or inactivate bacteria.	N/A
II (b)	Virus Removal	Will remove or inactivate virus.	N/A
III (c)	Protozoa Removal	Will remove or inactivate Cryptosporidium and Giardia. Will not remove or inactivate bacteria and virus unless II(a) and II(b) is passed.	✓
III.	Turbidity and Particulate Reduction	Reduces Cloudiness	N/A
IV.	Taste and Odour Reduction	Reduces Tastes and Odours	✓
V.	Chemical Treatment	Decreases Carbon Chemicals and Chlorine	✓
<p>WARNING: FOR CORRECT OPERATION OF THIS APPLIANCE IT IS ESSENTIAL TO OBSERVE THE MANUFACTURER'S INSTRUCTIONS.</p> <p>The filter includes KDF media for protection against bacterial growth.</p>			



MADE IN
USA



ASSEMBLED
IN AUSTRALIA

WaterFilters

AUSTRALIA

Water Filters Australia Pty Limited ABN: 78 089 574 489

PO Box 636 Freshwater NSW 2096

Email: info@wfa.com.au

Web: www.wfa.com.au

For all enquiries call the National Customer Service Centre on: **1300 785 355**

PR-OMTR v2